



1 Mortar, stainless steel

Mortar and pestle head are both made from stainless steel.

Bochem

Description	Capacity ml	PK	Cat. No.
Mortar	250	1	6.900 119
Pestle		1	6.079 568



2 3 Analytical Sieve Shakers AS 200 basic/digit/control, AS 300 control, AS 450 control

Sieve shakers are used in research & development, quality control of raw materials, interim and finished products as well as in production monitoring.

Retsch

Features:

- Sieving with 3D effect
- For wet and dry sieving
- Short sieving times
- Low-noise, maintenance-free



AS 200 basic: favourably priced basic model.

AS 200 digit: powerful comfort model with touch-sensitive keypad, digital display, interval sieving.

AS 200 control: like AS 200 digit, but microprocessor-controlled, with freely selectable intervals and digital vibration amplitude setting. It can be calibrated and, for the first time, allows 100% reproducible sieving results worldwide, even if different instruments are used. The AS 200 control has an integrated interface for the evaluation software EasySieve®. At the same time it also offers all the requirements for test materials monitoring according to ISO 9000 ff.

AS 300 control: like AS 200 control; also suitable for sieves up to 315mm diameter and for higher loads.

AS 450 control: like AS 200 control but only suitable for 400mm diam. and 450mm diam. sieves. The optimized electromagnetic drive with RETSCH's CET technology allows for an amplitude up to 2.2mm even with maximum loads up to 25kg. Manual re-sieving is no longer required.

Specifications

Max. number of fractions (depending on sieve size):

AS 200, AS 300:

9/17

AS 450:

14/11

Movement of sample:

orbital with vibration

Height of sievetower

AS 200, AS 300:

up to approx. 450mm

AS 450:

up to approx. 940mm

Max. charge/quantity of sample:

AS 200:

3kg

AS 300 control:

5kg

AS 450:

25kg

Timer:

AS 200 digit, control, AS 300:

digital

AS 200 basic:

analog

Type	Measuring range	Dimensions (W x D x H) mm	Weight kg	For Sieve sizes (diam.) mm	PK	Cat. No.
AS 200 basic	20µm to 25mm	400 x 350 x 230	30	100 / 150 / 200 / 203	1	9.739 223
AS 200 digit	20µm to 25mm	400 x 350 x 230	30	100 / 150 / 200 / 203	1	9.739 224
AS 200 control	20µm to 25mm	400 x 350 x 230	30	100 / 150 / 200 / 203	1	9.739 273
AS 300 control	36µm to 40mm	400 x 400 x 235	35	100 / 150 / 200 / 203 / 305 / 315	1	9.739 241
AS 450 control	20µm to 125mm	715 x 435 x 630	220	400 / 450	1	9.739 277

Analytical Sieve Shakers AS 400 control, AS 200 tap/ jet



Retsch

AS 400 control:

The AS 400 control is used for the sieving of dry goods with test sieves of a diameter up to 400mm. The uniform, horizontal circular motion ensures exact separation of the product to be sieved.

Features:

- Sieving with circular sieving motion according to DIN 53477
- Free digital adjustment of all process parameters (time, speed or sieve acceleration, interval)
- Memory for up to 9 SOPs
- Integrated interface for evaluation software EasySieve®

Electrical supply data: 100-240 V, 50/60 Hz

The clamping devices of AS 200 and AS 300 are also suitable for the AS 400.

AS 200 tap:

For sieve analysis of certain products such as activated carbon, abrasives, coal, spices and diamonds, as specified in the corresponding standards.

Features:

- Horizontal, circular sieving motion with vertical taps
- Suitable for dry sieving
- Robust and maintenance-free

Electrical supply data: different voltages, 1-phase

AS 200 jet:

The air jet sieving machine AS 200 jet is particularly suitable for light materials with particle sizes in the lower micron range which tend to agglomerate.

Features:

- Open Mesh Function to reduce the number of near-mesh particles
- Operation with standard Retsch sieves, 203 mm (8") diameter, 1" or 2" high
- Adapter for 200mm sieves optional
- Free manual (standard) or automatic (accessory) pressure regulation
- High flexibility through adjustable nozzle speed
- Memory for up to 9 SOPs, additional Quick Start mode

Electrical supply data: 100-240 V, 50/60 Hz

Please order clamping devices (except AS 200 tap), sieves and collecting pans separately.



9.739 242



9.739 276



6.238 239

Specifications

Max. number of fractions (depending on sieve size):

AS 400 control:	7/9/17
AS 200 tap:	7/13
AS 200 jet:	1 (2 with cyclone)

Movement of sample:

AS 400 control:	circular
AS 200 tap:	circular with taps
AS 200 jet:	dispersion by air jet

Height of sievetower

AS 400 control:	up to approx. 450mm
AS 200 tap:	up to approx. 350mm
AS 200 jet:	up to approx. 50mm

Max. charge/quantity of sample:

AS 400 control:	15kg
AS 200 tap:	6kg
AS 200 jet:	0.3 to 100g
Timer:	digital

Type	Measuring range	Dimensions (W x D x H) mm	Weight kg	For Sieve sizes (diam.) mm	PK	Cat. No.
AS 400 control	45 µm to 63 mm	540 x 507 x 260	70	100 /150 / 200 /203 / 305 / 315 / 400	1	9.739 242 1
AS 200 tap	20 µm to 25 mm	735 x 530 x 675*	92*	200 / 203	1	9.739 276 2
AS 200 jet	10 µm to 4 mm	460 x 305 x 288	14	203	1	6.238 239 3

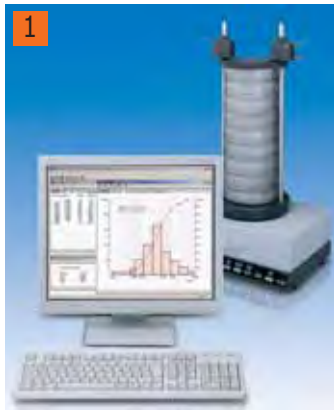
*with sound protection cabinet

Accessories for AS 200 jet

NEW!

Retsch

Description	PK	Cat. No.
Vacuum cleaner, 230V, 50/60Hz (other electrical versions available)	1	9.739 600
Filter bags for industrial vacuum cleaner	5	9.739 294
Cyclone with collector (250ml wide-mouth bottle)	1	9.739 601
Automatic vacuum regulation	1	9.739 296
Adapter and lid for analysing sieves 200 x 50mm and 200 x 25mm	1	9.739 253



1 Software EasySieve® for Sieve Shakers AS control/AS 200 tap/AS jet

NEW!

Retsch

Software for particle size analyses.

Features:

- Automatic registration, evaluation and administration of measurement data
- Logical design, self-explanatory
- Measurement protocol in accordance with standards
- Easy selection and configuration of common analytical scales
- English and German
- For automatic control of sieve shakers AS 200 control, AS 300 control, AS 450 control, AS 400 control, AS 200 tap, AS 200 jet
- For Windows® 2000/XP/Vista

Type	PK	Cat. No.
EasySieve® Single-user-licence, incl. adapter RS232-USB	1	6.238 927
Adapter RS232-USB	1	9.739 250

Clamping device for Sieve Shakers AS series

NEW!

Retsch

For	Description	PK	Cat. No.
AS 200 + AS 300 + AS 400	Clamping device, comfort, for 200/203mm dia. sieves	1	9.739 226
AS 200 + AS 300 + AS 400	Clamping device, standard, for 200/203mm dia. sieves	1	9.739 227
AS 200 + AS 300 + AS 400	Clamping device economy for 100/150/200/203mm dia. sieves	1	9.739 228
AS 300 + AS 400	Clamping device, standard, for 305/315mm dia. sieves	1	9.739 261
AS 300 + AS 400	Clamping device, comfort, for 305/315mm dia. sieves	1	9.739 260
AS 200	Universal clamping device, comfort, for 100/150/200/203mm dia. sieves	1	9.739 229
AS 200	Universal clamping device, standard, for 100/150/200/203mm dia. sieves	1	9.739 230
AS 200	Universal wet sieving clamping device, standard, for 100/150/200/203mm dia. sieves	1	9.739 231
AS 300	Wet sieving clamping device, standard, for 305mm dia. sieves	1	9.739 251
AS 300	Wet sieving clamping device, comfort, for 305mm dia. sieves	1	6.232 828
AS 400	Clamping device, comfort, for 400mm dia. sieves	1	9.739 265
AS 400	Clamping device, standard, for 400mm dia. sieves	1	9.739 266
AS 450	Clamping device, standard, for 400/450mm dia. sieves	1	9.739 262
AS 450	Clamping device, comfort, for 400/450mm dia. sieves	1	9.739 267
AS 450	Wet sieving clamping device, standard, for 400/450mm dia. sieves	1	9.739 268
AS 450	Wet sieving clamping device, comfort, for 400/450mm dia. sieves	1	9.739 269

Other accessories, such as sieve lids and intermediate receivers, are available on request.

Sieve Receivers, stainless steel

Stainless steel. In accordance to DIN ISO 3310-1 C and ASTM E 11-95.

Retsch

Description	PK	Cat. No.
100mm dia., with outlet	1	9.739 237
200mm dia., without outlet	1	9.739 235
200mm dia., with outlet	1	9.739 236
203mm dia., without outlet	1	9.739 239
203mm dia., with outlet	1	9.739 240

Other collecting pans are available on request.



2 Sieving aids

For difficult to separate materials which require dry sieving. Different aids are used according to mesh size.

Retsch

Type	PK	Cat. No.
Steatite ball, 6mm dia., 150g	1	9.739 238
Nylon brushes	1	9.826 131
Vulkollan cube 12 x 12 x 12mm	10	9.826 132
Rubber ball, 20mm dia.	5	9.826 133
Agate ball, dia. 10mm	10	9.826 134
Test sieve rack for max. 10 sieves up to 203mm dia., 50mm height	1	9.739 243

Test sieve sets for Sieve Shakers AS series

Retsch

For	Dia. mm	Description	PK	Cat. No.
AS 200	200	Sieve set, mesh 45µm, 63µm, 125µm, 250µm, 500µm, 1mm, 2mm, 4mm, with receiver	1	9.739 255
AS 300	305	Sieve set, mesh 630µm, 1.25mm, 2.5mm, 5mm, 10mm, 20mm, 31.5mm, with receiver	1	9.739 256
AS 400	400	Sieve set, mesh 500µm, 1mm, 2mm, 5mm, 10mm, 20mm, with receiver	1	9.739 257

Other accessories, such as sieve lids and intermediate receivers, are available on request.

1 Vibratory sieve shaker ANALYSETTE 3 PRO and SPARTAN

Fritsch

For quantitative particle size analysis of dry samples and suspensions of all kind by dry and wet sieving with woven test sieves. FRITSCH Sieve Shakers satisfy all requirements for accurate and reproducible sieving analysis and perform automatic sieve analysis with the control and evaluation software AUTOSIEVE, which is delivered free of charge. The top model ANALYSETTE 3 PRO guarantees absolutely reproducible sieving results due to automatic amplitude control, programme selection, can be integrated into any quality management system according to DIN EN ISO 9000, has an RS232-interface, to mention only some of its innovative and practical features.



Sieving:	dry or wet
Sieve diameters:	100mm, 150mm, 200mm or 8"
Maximum number of sieves:	10 x 50mm (full) or 18 x 25mm (half) height
Sieves:	woven mesh metal sieves
Measuring range:	Dry sieving: 32µm to 63mm Wet sieving: 20µm to 10mm
Sample quantity:	Dry sieving: up to 2kg (depending on the sample material and sieve used) Wet sieving: 20 to 100g
Measuring time:	Dry sieving: 3 to 20 mins Wet sieving: 5 to 10 mins
Power supply:	100-240V/1~, 50-60Hz
Dimensions (WxDxH):	370 x 400 x 200mm
Net weight:	21kg

Type	PK	Cat. No.
Sieve Shaker ANALYSETTE 3 PRO	1	9.826 402
Sieve Shaker ANALYSETTE 3 SPARTAN	1	9.826 403

Clamping lid, sieve pan and sieves must be ordered separately.

Accessories for vibratory sieve shakers, ANALYSETTE 3 PRO and SPARTAN

Fritsch

Type	For	PK	Cat. No.
Plexiglas clamping lid for 8" / 200mm dia. sieves	Dry sieving	1	9.826 404
Clamping lid (without window) for all test sieves up to 200mm / 8" dia.	Dry sieving	1	9.826 405
Sieve tensioning system TorqueMaster (incl. clamping lid)	Dry sieving	1	9.826 943
Interposed sieve pan made of stainless steel 200mm dia., 50mm height	Dry sieving	1	9.826 939
Interposed sieve pan made of stainless steel 8" dia., 2" height	Dry sieving	1	9.826 940
Sieve pan, stainless steel 200mm dia., 50mm high	Dry sieving	1	9.826 444
Sieve pan, stainless steel 8" dia., 2" high	Dry sieving	1	9.826 406
Clamping lid, plexiglas with 2 rotation nozzles for test sieves 8" / 200mm dia.	Wet sieving	1	9.826 401
Sieve pan, stainless steel with outlet 200mm dia., 50 mm high	Wet sieving	1	9.826 446
Interposed sieve ring with 3 nozzles for test sieves 200mm dia.	Wet sieving	1	9.826 447
Sieve pan, stainless steel with outlet, 8" dia., 2" high	Wet sieving	1	9.826 449
Interposed sieve ring with 3 nozzles for test sieves 8" dia.	Wet sieving	1	9.826 450

Test Sieves

With unique advantages:

- Retsch has developed an entirely new manufacturing process providing a level of quality and uniformity in sieve manufacturing which had not previously been attained. Benefits:
1. Previously unattained product quality owing to fully automatic production and continuous optical inspection.
 2. Innovative resistance welding technology guarantees permanently taut wire mesh.
 3. High level of corrosion resistance and easy to clean owing to the use of high-alloy stainless steel (grades: 316 or 1.4435).
 4. "one-piece cast" sieve frame and seamless mesh joint prevent cross contamination (no lead flash, no solder, etc.).
 5. Maximum stability and optimum density of the sieve stack.
 6. 15% lighter than traditional sieves whilst at the same time having larger sieving area.
 7. Clear sieve marking and traceability by individual laser engraving on each sieve.

Retsch


1 Test Sieves, 200 x 50 mm.

Retsch

Mesh size µm	PK	Cat. No.
20	1	9.226 650
25	1	9.226 651
32	1	9.226 652
36	1	9.226 653
38	1	9.226 654
40	1	9.226 655
45	1	9.226 656
50	1	9.226 657
53	1	9.226 658
56	1	9.226 659
63	1	9.226 660
71	1	9.226 661
75	1	9.226 662
80	1	9.226 663
90	1	9.226 664
100	1	9.226 665
106	1	9.226 666
112	1	9.226 667
125	1	9.226 668
140	1	9.226 669
150	1	9.226 670
160	1	9.226 671
180	1	9.226 672
200	1	9.226 673
212	1	9.226 674
224	1	9.226 675
250	1	9.226 676
280	1	9.226 677
300	1	9.226 678
315	1	9.226 679
355	1	9.226 680
400	1	9.226 681
425	1	9.226 682
450	1	9.226 683
500	1	9.226 684
560	1	9.226 685
600	1	9.226 686
630	1	9.226 687
710	1	9.226 688
800	1	9.226 689
850	1	9.226 690
900	1	9.226 691



1 Test Sieves, 200 x 50 mm

DIN ISO 3310-1 and BS 410-1. Dimensions (dia. x h): 200mm x 50mm.

Retsch

Aperture size mm	PK	Cat. No.
1.00	1	9.226 692
1.12	1	9.226 693
1.18	1	9.226 694
1.25	1	9.226 695
1.40	1	9.226 696
1.60	1	9.226 697
1.70	1	9.226 698
1.80	1	9.226 699
2.00	1	9.226 700
2.24	1	9.226 701
2.36	1	9.226 702
2.50	1	9.226 703
2.80	1	9.226 704
3.15	1	9.226 705
3.35	1	9.226 706
3.55	1	9.226 707
4.00	1	9.226 708
4.50	1	9.226 709
4.75	1	9.226 710
5.00	1	9.226 711
5.60	1	9.226 712
6.30	1	9.226 713
6.70	1	9.226 714
7.10	1	9.226 715
8.00	1	9.226 716
9.00	1	9.226 717
9.50	1	9.226 718
10.00	1	9.226 719
11.20	1	9.226 720
12.50	1	9.226 721
13.20	1	9.226 722
14.00	1	9.226 723
16.00	1	9.226 724
18.00	1	9.226 725
19.00	1	9.226 726
20.00	1	9.226 727
22.40	1	9.226 728
25.00	1	9.226 729
26.50	1	9.226 730
28.00	1	9.226 731
31.50	1	9.226 732
35.50	1	9.226 733
37.50	1	9.226 734
40.00	1	9.226 735
45.00	1	9.226 736
50.00	1	9.226 737
53.00	1	9.226 738
56.00	1	9.226 739
63.00	1	9.226 740
71.00	1	9.226 741
75.00	1	9.226 742
80.00	1	9.226 743
90.00	1	9.226 744
100.00	1	9.226 745
106.00	1	9.226 746
112.00	1	9.226 747
125.00	1	9.226 748





1 Test Sieves, 200 x 25 mm

DIN ISO 3310-1 and BS 410-1. Dimensions (dia. x H): 200mm x 25mm.

Retsch

Mesh size µm	PK	Cat. No.
20	1	9.226 750
25	1	9.226 751
32	1	9.226 752
36	1	9.226 753
38	1	9.226 754
40	1	9.226 755
45	1	9.226 756
50	1	9.226 757
53	1	9.226 758
56	1	9.226 759
63	1	9.226 760
71	1	9.226 761
75	1	9.226 762
80	1	9.226 763
90	1	9.226 764
100	1	9.226 765
106	1	9.226 766
112	1	9.226 767
125	1	9.226 768
140	1	9.226 769
150	1	9.226 770
160	1	9.226 771
180	1	9.226 772
200	1	9.226 773
212	1	9.226 774
224	1	9.226 775
250	1	9.226 776
280	1	9.226 777
300	1	9.226 778
315	1	9.226 779
355	1	9.226 780
400	1	9.226 781
425	1	9.226 782
450	1	9.226 783
500	1	9.226 784
560	1	9.226 785
600	1	9.226 786
630	1	9.226 787
710	1	9.226 788
800	1	9.226 789
850	1	9.226 790
900	1	9.226 791

We can supply this
manufacturer's
 whole
product range !



1 Test Sieves, 200 x 25 mm.

DIN ISO 3310-1 and BS 410-1. Dimensions (dia. x H): 200mm x 25mm.

Retsch

Aperture size mm	PK	Cat. No.
1.00	1	9.226 792
1.12	1	9.226 793
1.18	1	9.226 794
1.25	1	9.226 795
1.40	1	9.226 796
1.60	1	9.226 797
1.70	1	9.226 798
1.80	1	9.226 799
2.00	1	9.226 800
2.24	1	9.226 801
2.36	1	9.226 802
2.50	1	9.226 803
2.80	1	9.226 804
3.15	1	9.226 805
3.35	1	9.226 806
3.55	1	9.226 807
4.00	1	9.226 808
4.50	1	9.226 809
4.75	1	9.226 810
5.00	1	9.226 811
5.60	1	9.226 812
6.30	1	9.226 813
6.70	1	9.226 814
7.10	1	9.226 815
8.00	1	9.226 816
9.00	1	9.226 817
9.50	1	9.226 818
10.00	1	9.226 819
11.20	1	9.226 820
12.50	1	9.226 821
13.20	1	9.226 822
14.00	1	9.226 823
16.00	1	9.226 824
18.00	1	9.226 825
19.00	1	9.226 826
20.00	1	9.226 827
22.40	1	9.226 828
25.00	1	9.226 829
26.50	1	9.226 830
28.00	1	9.226 831
31.50	1	9.226 832
35.50	1	9.226 833
37.50	1	9.226 834
40.00	1	9.226 835
45.00	1	9.226 836
50.00	1	9.226 837
53.00	1	9.226 838
56.00	1	9.226 839
63.00	1	9.226 840
71.00	1	9.226 841
75.00	1	9.226 842
80.00	1	9.226 843
90.00	1	9.226 844
100.00	1	9.226 845
106.00	1	9.226 846
112.00	1	9.226 847
125.00	1	9.226 848





1 Test Sieves, 203 x 50 mm

DIN ISO 3310-1 and BS 410-1. Dimensions (dia. x H): 203mm x 50mm.

Retsch

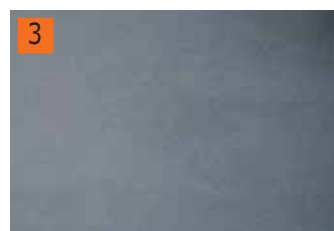
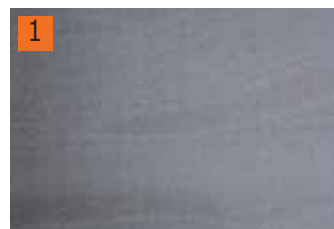
Mesh size μm	PK	Cat. No.
20	1	9.226 850
25	1	9.226 851
32	1	9.226 852
36	1	9.226 853
38	1	9.226 854
40	1	9.226 855
45	1	9.226 856
50	1	9.226 857
53	1	9.226 858
56	1	9.226 859
63	1	9.226 860
71	1	9.226 861
75	1	9.226 862
80	1	9.226 863
90	1	9.226 864
100	1	9.226 865
106	1	9.226 866
112	1	9.226 867
125	1	9.226 868
140	1	9.226 869
150	1	9.226 870
160	1	9.226 871
180	1	9.226 872
200	1	9.226 873
212	1	9.226 874
224	1	9.226 875
250	1	9.226 876
280	1	9.226 877
300	1	9.226 878
315	1	9.226 879
355	1	9.226 880
400	1	9.226 881
425	1	9.226 882
450	1	9.226 883
500	1	9.226 884
560	1	9.226 885
600	1	9.226 886
630	1	9.226 887
710	1	9.226 888
800	1	9.226 889
850	1	9.226 890
900	1	9.226 891



1 2 3 Mesh, polyester

Thermo-fixed PE mesh with temperature resistance from 75°C to +150°C (short). For long term heating max. 125°C. Resistant to acids but not alkalis. Dimensions: Minimum width 102cm, Length 100cm.

Mesh size μm	PK	Cat. No.
1	1	9.068 210
5	1	9.068 211
6	1	9.068 212
10	1	9.068 213
15	1	9.068 214
20	1	9.068 215
30	1	9.068 216
40	1	9.068 217
50	1	9.068 218
53	1	9.068 219
60	1	9.068 220
70	1	9.068 221
80	1	9.068 222
90	1	9.068 223
100	1	9.068 224
105	1	9.068 225
150	1	9.068 226
200	1	9.068 227
250	1	9.068 228
300	1	9.068 229
400	1	9.068 230
500	1	9.068 231
600	1	9.068 232
700	1	9.068 233
800	1	9.068 234
900	1	9.068 235
1000	1	9.068 236
1600	1	9.068 237
2000	1	9.068 238
3000	1	9.068 239
4000	1	9.068 240

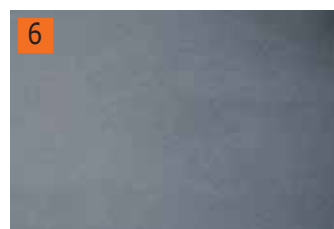
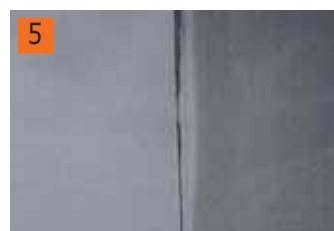


4 5 6 Mesh, Polyamide

NEW!

Thermo-fixed Polyamide (Nylon) mesh is temperature stable from -40°C to +115°C. Dry in water from 95°C to 100°C. Stability in acids is limited and dependant on concentration and temperature. Nylon exhibits outstanding stability in alkalis, including sodium and potassium solutions. Its chemical behaviour with respect to organic solvents is moderate to good. Minimum mesh width: 102cm, Length: 1m

Mesh size μm	PK	Cat. No.
1	1	9.068 276
5	1	9.068 277
6	1	9.068 278
10	1	9.068 279
15	1	9.068 280
20	1	9.068 281
30	1	9.068 282
40	1	9.068 283
50	1	9.068 284
60	1	9.068 285
70	1	9.068 286
80	1	9.068 287
90	1	9.068 288
100	1	9.068 289
125	1	9.068 290
150	1	9.068 291
200	1	9.068 292
250	1	9.068 293
300	1	9.068 294
400	1	9.068 295
500	1	9.068 296
600	1	9.068 297
700	1	9.068 298
780	1	9.068 308
800	1	9.068 299
900	1	9.068 300
950	1	9.068 301
1000	1	9.068 302
1150	1	9.068 307
1800	1	9.068 303
2000	1	9.068 304
3300	1	9.068 305
4000	1	9.068 306





1 Sample Divider PT 100

Rotary tube divider for the representative sample division with an extremely high division accuracy. Rapid and easy handling of sample vessels thanks to quick-release clamps.

Retsch

Specifications:

- Feed size: to 10mm
- Number of samples: 8 (6 or 10 heads also available on request)
- Throughput/charge: 5000ml
- Dimensions (WxDxH): 400 x 347 x 840mm
- Weight: approx. 34kg
- Supply requirements: 230V, 50Hz

Supplied with: PT 100 incl. deviding head with 8 quick-release sample outlets, vibratory feeder DR 100/40 and 10 sample bottles (250ml).

Type	PK	Cat. No.
PT 100	1	9.739 107



2 Vibratory Feeder DR 100

For the continuous, automatic material conveyance to, and feeding of, sample dividers, mills, balances or analytical and measuring apparatus.

Retsch

Specifications:

- Weight: approx. 10kg
- Supply requirements: 220-240V, 50Hz.

DR 100 supplied with: sample divider attachment, with plug-in, 40mm wide chute and mounting plate.

Accessories: Further hoppers, chutes and vibrating tubes made of stainless steel available on request.

Type	PK	Cat. No.
Vibratory feeder DR 100	1	9.739 110



3 Rotating Tube Divider PK 1000

NEW!

For removal of one or several representative samples. Fixed or adjustable division ratio.

Retsch

Specifications:

- Suitable for pourable powder and granular bulk goods
- Feed size: up to 10mm, throughput/charge: 30L
- Number of samples: 1, 2, 3, 4 and 6 (depending on lower cone selected)
- Dimensions (WxDxH): 560 x 700 x 1150mm
- Weight: approx. 47kg, supply requirements: 220-240V, 50Hz

Supplied with: rotating tube divider with bottom cone and one adjustable sample outlet (max. division ratio 1:5), vibratory feeder DR 100/75 and hopper, 10 x 500ml wide-mouth sample bottles and 1 x 30L reject collector.

For Art. No. 9.739 108 please order cone separately.

Type	PK	Cat. No.
Rotary divider PK 1000, incl. vibratory feeder and lower cone 1:5	1	9.739 115
Bottom cone for PK 1000, 1 adjustable sample outlets	1	6.241 185
Bottom cone for PK 1000, 2 adjustable sample outlets	1	6.241 186
Bottom cone for PK 1000, 3 adjustable sample outlets	1	6.241 187

1 Sample Splitters, RT series

To provide separation of pourable powders and bulk materials on site and in the laboratory. Operates independently of mains supply. Available in 6 sizes. Number of samples: 2.

Retsch



Type	Feed size up to mm	Maximum Throughput/ Charge	Dimensions (W x D x H)		Weight	PK	Cat. No.
			mm	mm			
RT 6.5	6.3	5 L	300 x 270	250	3.50	1	9.739 200
RT 12.5	12.5	5 L	300 x 270	250	3.50	1	9.739 201
RT 25	25.0	16 L	620 x 420	260	21.50	1	9.739 202
RT 37.5	37.5	16 L	620 x 420	260	21.50	1	9.739 203
RT 50	50	16 L	620 x 420	260	21.50	1	9.739 204
RT 75	75	16 L	620 x 420	260	21.50	1	9.739 205

2 Rotary cone sample divider LABORETTE 27

Creates the optimal basis for reliable analysis of a representative sample. Representative samples division is the foundation for every precise analysis. The rotary cone sample divider LABORETTE 27 achieves due to its unique combination of three methods previously unheard of dividing precision. Variable division ratios and the design in several variants guarantee adaptation to a wide range of applications with a dividing accuracy of up to 99.9%. For optimal sample feeding the vibratory feeder LABORETTE 24 (optional) is recommended.

Fritsch



Division:	of solid samples and suspensions, without modification
Dividing ratio:	1:8, 1:10, 1:30
Number of sub-sets:	8, 10, 3
Max. particle size:	10mm, 2.5mm
Max. feed volume:	4000ml, 2500ml, 300ml
Sample bottle capacities:	15, 20, 25, 30, 250, 500ml
Power supply:	230V/1~, 50-60Hz
Dimensions (WxDxH):	270 x 450 x 460mm
Net weight:	8kg

Type	PK	Cat. No.
Rotary cone sample divider LABORETTE 27	1	9.738 310

Instrument also available in other voltages.
Dividing heads must be ordered separately.

Accessories for rotary cone sample divider LABORETTE 27

Fritsch

Dividing ratio	Material	Sample bottles	PK	Cat. No.
1:8	POM plastic	500	1	9.738 316
1:8	aluminium	500	1	9.738 313
1:10	POM plastic	250	1	9.738 317
1:10	aluminium	250	1	9.738 318
1:30	POM plastic	15	1	9.738 319
1:30	aluminium PTFE-coated	15	1	9.738 314

All dividing heads are delivered inclusive of sample bottles and funnels.

